

MRLDS-450

Application in E2

Note: *Installing the MRLDS-450 requires version E2E 4.10F01 or later.*

Note: *You must add a description file for version E2 3.10F01 or less.*

New Installation: Uploading the MRLDS-450 Description File to E2

The MRLDS-450 requires adding a description file (P/N 527-0754) and license key to E2 version 3.0X or later. Contact Customer Service to obtain this information:

Email: ColdChain.CustomerService@copeland.com

Phone: 770-425-2724 Option 4

Note: *UltraSite32 software should be installed to perform a description file upload.*

Connect to E2 using UltraSite32

1. Launch UltraSite program and login.
2. View the **Directory Level** and then **Site Level**.
3. Right-click **Site Level** and click **Connect**.
4. Locate the E2 where the **MRLDS_450.dsc** will be installed.
5. Right-click the unit and select **Upload Description File**.
6. Click **Browse** to select the appropriate description file (5270754.dsc) file for MRLDS-450 from the computer and click **Open**.
7. Click **Upload**. A window will display the description file was successfully imported. Click **OK**. The description file should appear inside the window.
8. **Once completed, disconnect from the E2 and reboot the E2 controller.**

Note: *Do not omit the step of rebooting the controller.*



Device Setup

E2 Serial Port Setup

1. Log into the E2 controller.
2. Press **Menu**, **7**, **3**, and **1** (General Controller Information), then press **F2** twice to move to the **C3: Serial** tab.
3. Press the down arrow key to the **COM Connection** where the device is wired.
4. Press **F4** (**LOOK UP**) and select **MODBUS-1**, **MODBUS-2** or **MODBUS-3**, then press **Enter** to set configuration.

5. Press **F4** to select options and set the MODBUS connection as follows:

COM Baud:	19200 Baud
COM Data Size:	8
COM Parity:	Even
COM Stop Bits:	1

6. Press **Enter** to set configuration, then **Next** to save changes.
7. Press **Home** to return to the *Home* screen.

MODBUS Connection

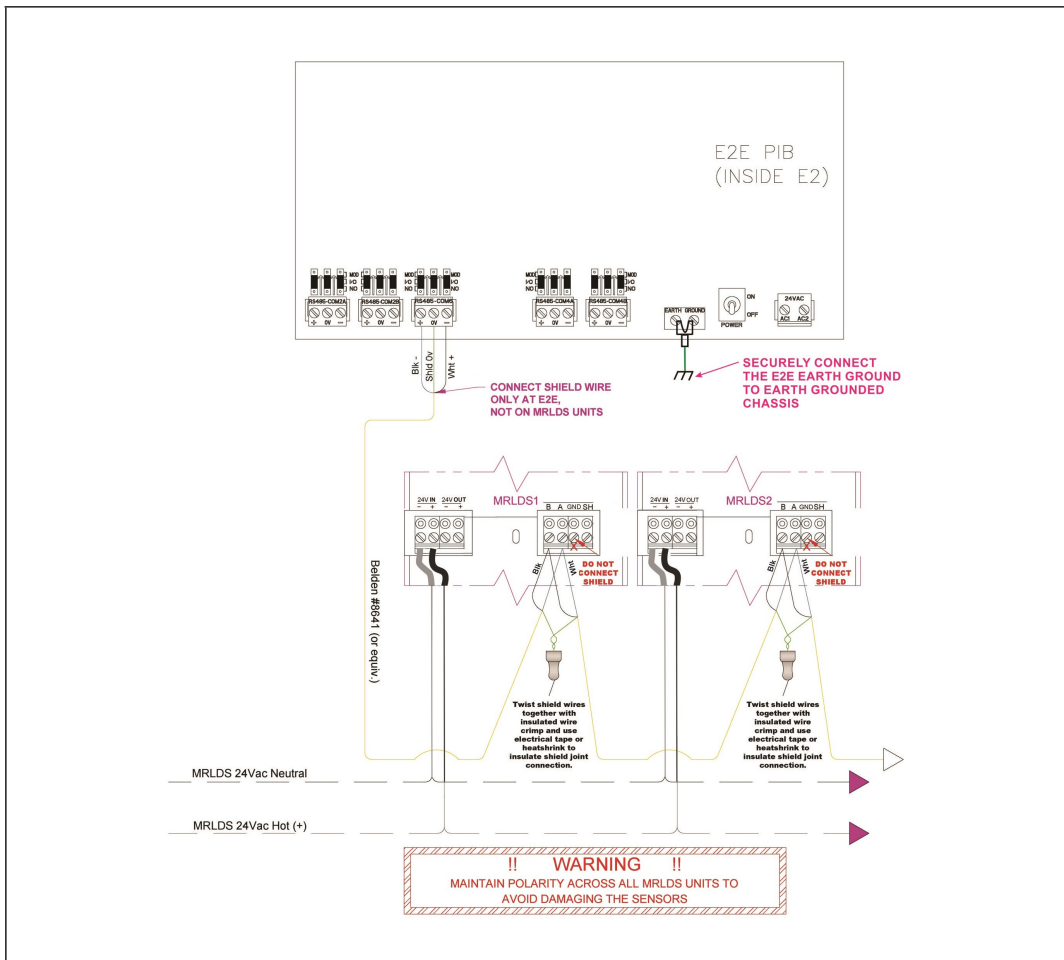


Figure 1 - E2 Device and COMM Setup

Adding the MRLDS-450 Application in E2

1. Press then **7**, **7**, and **2** to enter **Connected I/O Boards and Controllers**.
2. Press **F2** to move to the **C3: ECT** tab. Highlight the **MRLDS-450** application and enter the desired number of devices under **Quantity** up to a maximum of **15**.

ECT	Board Type	Quantity	Max
#1	: CC T-Stat	0	0
#2	: CT Drive	0	16
#3	: CoreSense Comm	0	31
#4	: CtrlLink ACC	0	63
#5	: CtrlLink CD	0	99
#6	: CtrlLink RSC	0	99
#7	: Discus	0	63
#8	: Energy Meter	0	30
#9	: ISD-1.0	0	64
#10	: ISD-2.0	0	63
#11	: K5 Ref Scroll	0	31
#12	: MRLDS	1	24
#13	: MRLDS-450	1	15
#14	: Perf Alert	0	63
#15	: RLDS	1	15
#16	: Status Display	0	7
#17	: Wireless Gateway	1	1

Figure 2 - ECT Tab

3. Press to save the changes.
4. Press to return to the **Home** screen.

Commissioning the MRLDS-450

1. Press then **7**, **7**, and **1** to enter the **Network Summary** screen.
2. Highlight the MRLDS-450 to be commissioned and press **F4**

Name	Type	Network Address	Rev	Status
E2 Unit03	RX400-Refrig	Ethernet:	3 4.09F04	This Controller
RLDS001	RLDS	MODBUS-1:	0 0.00	No Port
Wireless GW001	Wireless Gateway	(No Network):	- 0.00	Unknown
MRLDS-450001	MRLDS-450	MODBUS-1:	0 0.00	No Port
MRLDS001	MRLDS	MODBUS-1:	0 0.00	No Port
RACK A	Site Supervisor	Ethernet:	1 2.12B33	Online
RACK B	Site Supervisor	Ethernet:	2 2.12B06	Offline
LTR_RX_01	Site Supervisor	Ethernet:	4 2.11F01	Offline


ADVISORY SUMMARY
 Fails 3
 Alarms 0
 Notices 29

NETWORK OVERVIEW
 MODBUS-1

E2 Unit03
 Rev 4.09F04
 English-US

F1: DELETE RCRD F2: STATUS F3: NET STATUS F4: COMMISSION F5: SETUP

Figure 3 - Network Summary Screen

- If a box with **Select Network** appears on the screen, select the MODBUS number where you configured the device – either **MODBUS-1**, **MODBUS-2**, or **MODBUS-3** and press .

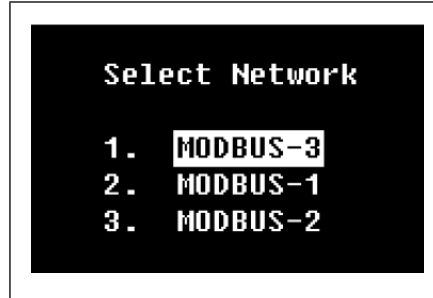



Figure 4 - Select MODBUS output

- Select the address for the device and press .

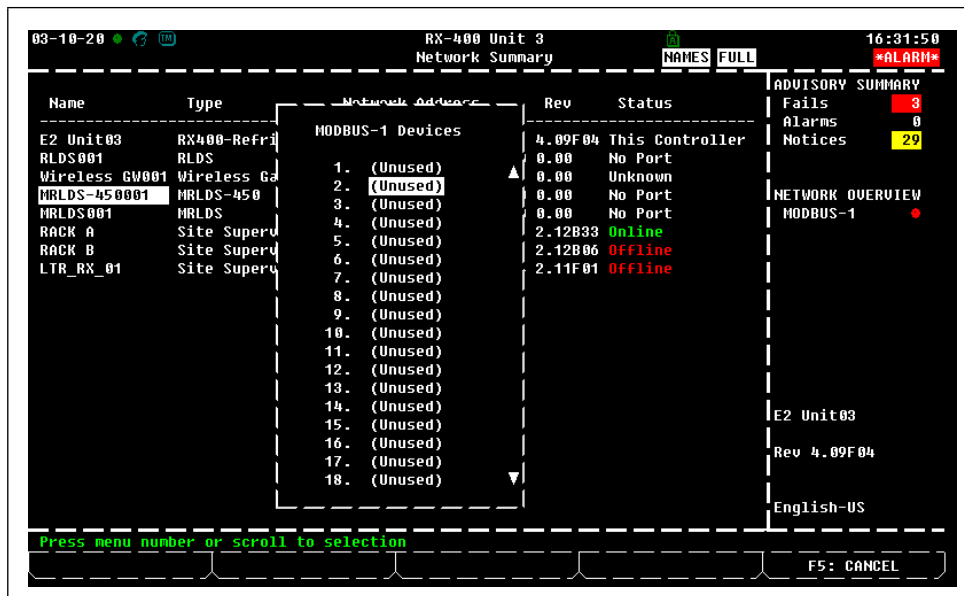



Figure 5 - Select Device Address

Note: The MODBUS address must be the same as the address assigned on the device.

- A window will appear. Press  to continue.

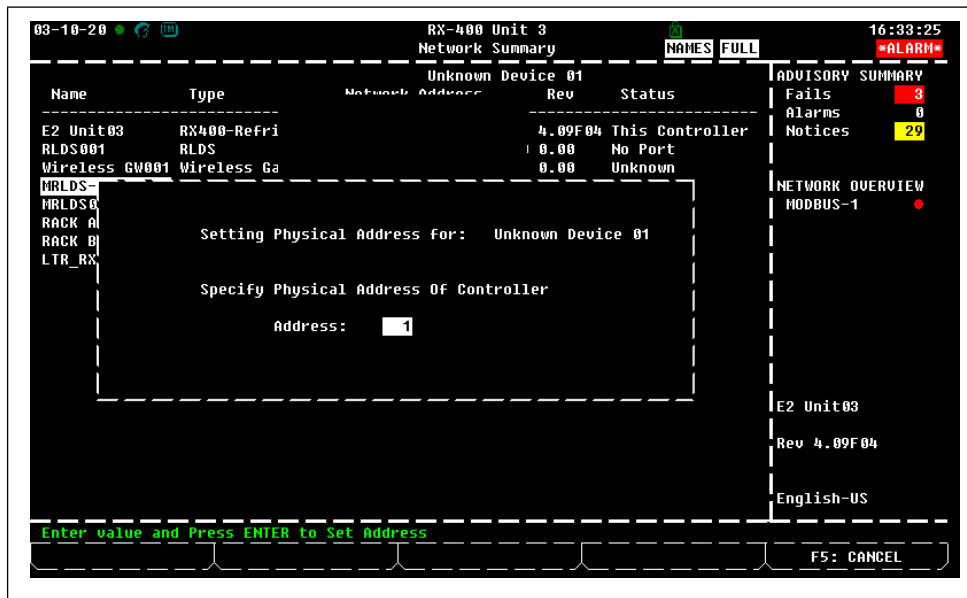








Figure 6 - Set the Physical Address for the MRLDS-450

- Press  to save the assigned address.
- Press  to return to the Home screen and press  then , , and  to enter the **Network Summary** screen again.
- After a few seconds, the MRLDS-450 should appear **Online**.

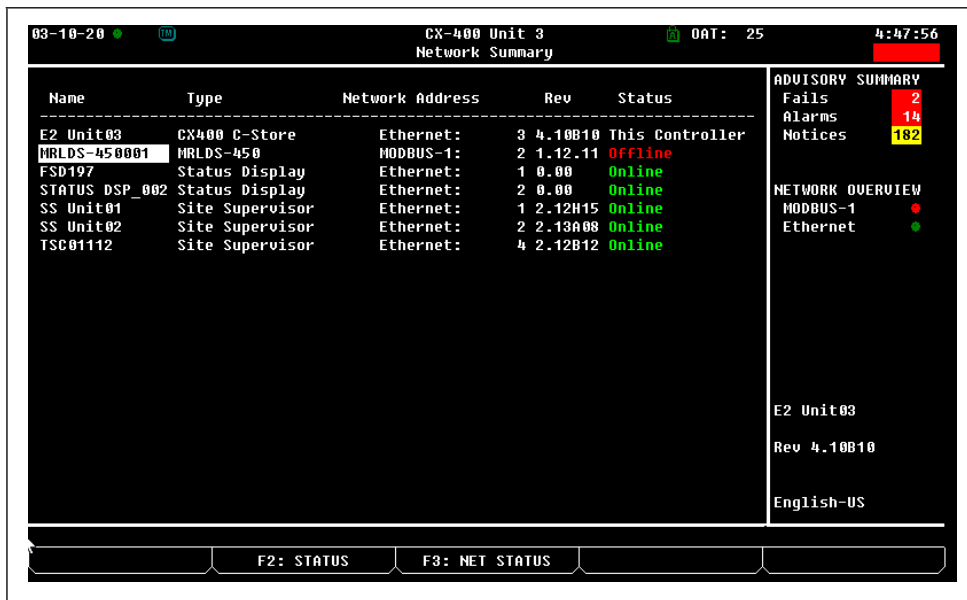


Figure 7 - MRLDS-450 Network Summary Screen Online Status

Viewing the Status

- Press **Menu** then **5**, **4**, **0** and **0** (this is equivalent to pressing **Menu**, **5**, **4**, **0**, **0**) or use the cursor to navigate to MRLDS-450 and press **Enter**



Figure 8 - Configured Applications

- View the status of the detector on the MRLDS-450 Summary screen and press **F5** to go to **Setup**.

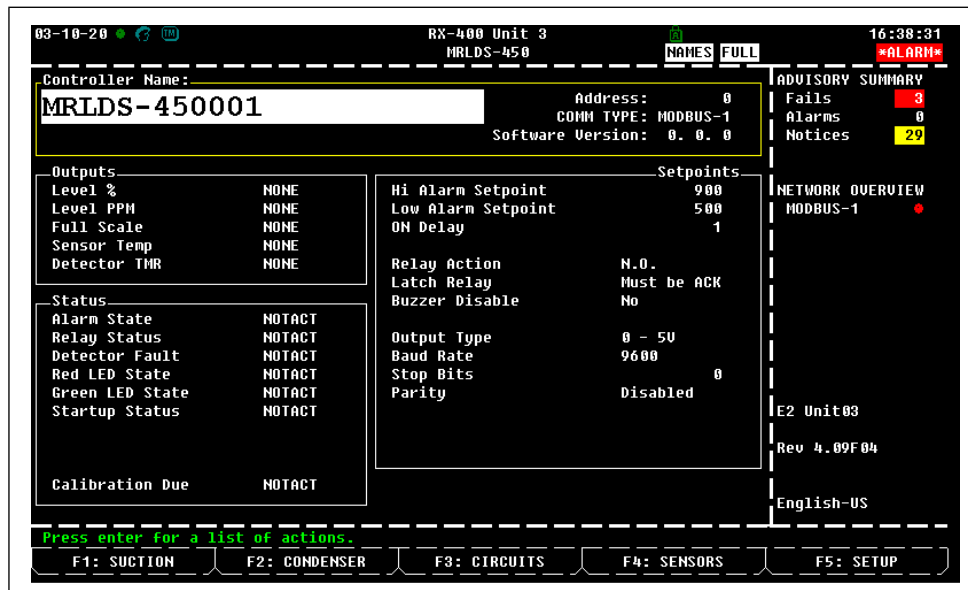


Figure 9 - MRLDS-450 Status Screen

Visit our website at copeland.com/en-us/products/controls-monitoring-systems for the latest technical documentation and updates. For Technical Support call 833-409-7505 or email ColdChain.TechnicalServices@Copeland.com