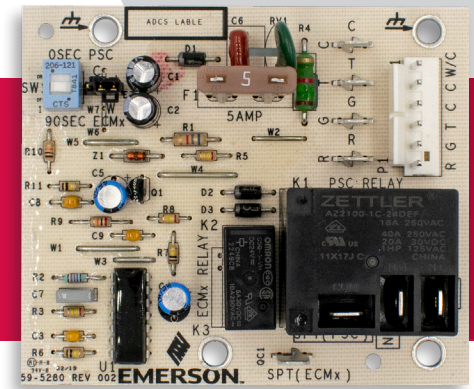


Carrier Single Stage Air Handler Controls for PSC and ECMx Blower Motors

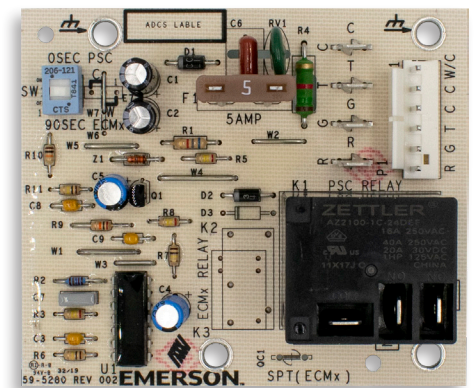
48P55-751, 48M55-751

D
OEM Direct

Fast and easy direct OEM replacement
for Carrier/ICP applications



48M55-751



48P55-751



Direct OEM Replacement Controls

Fast drop-in OEM mounting and wiring



Easy Installation & Configuration

Factory wiring for inline connector or spade terminals

Dipswitch selectable blower off delay

48M55-751 configures for either PSC or ECMx



Inventory Reduction

Use 48M55-751 for any single stage
Carrier equipment

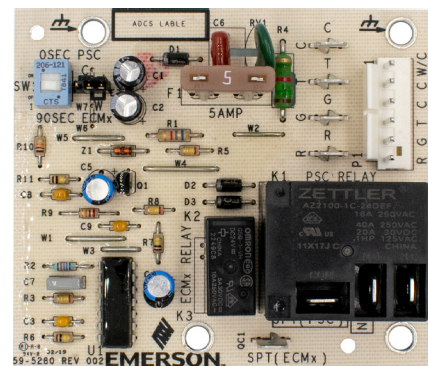
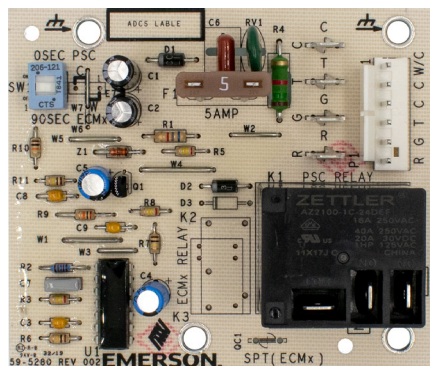


Complete Cross Reference

Extensive and up-to-date cross
reference by OEM model number

Carrier Single Stage Air Handler Controls for PSC and ECMx Blower Motors

48P55-751, 48M55-751 - Fast and easy direct OEM replacement for Carrier/ICP applications



Model Number	48P55-751	48M55-751
Blower Motor	PSC	PSC or ECMX (Jumper Selection)
Versatility	Replaces 6 part numbers	Replaces 9 part numbers
Mounting	Drop-in replacement	Drop-in replacement
Fuse	5 AMP	5 AMP
Input Voltage	24 VAC, 50/60 Hz	24 VAC, 50/60 Hz
Operating Temperature Range	-40° to 176°F (40° to 80°C)	-40° to 176°F (40° to 80°C)
Humidity Range	5-95% relative humidity (non-condensing)	5-95% relative humidity (non-condensing)
Limited Warranty	1 year	1 year

TIMING SPECIFICATIONS:

Thermostat Call	Blower ON Delay	Blower OFF Delay
Fan (G)	none	0 or 90 seconds (DIP switch selection)
Electric Heat (W)	none	none

48P55-751 CROSS REFERENCE:

Carrier / ICP Brands	CEPL130541-01
HK61EA006	1005-83-166A
HK61EA002	1171734
CES0130003-01	

48M55-751 CROSS REFERENCE:

Carrier / ICP Brands	CEPL130658-01-1
HK61EA010	CEPL130541-01
HK61EA006	1005-83-166A
HK61EA002	1172975
CES0130003-01	1171734

The White-Rodgers Mobile App:

- Cross referencing
- Product information
- Product selection



R-4963 (9/19)

©2019 Emerson Electric Co. • White-Rodgers and Emerson are trademarks of Emerson Electric Co. All rights reserved • Customer Service or Technical Help: 888-725-9797

Emerson.com/White-Rodgers

EMERSON. CONSIDER IT SOLVED.™