

Cargo Monitoring Solutions



Product Catalogue





Emerson Cargo Solutions

We help retailers, suppliers, growers, shippers, exporters and restaurants ensure only the freshest and safest foods reach consumers. Our core technologies - coupled with our cold chain expertise - provide complete temperature monitoring solutions for our customers. We place data at your fingertips to make food quality and safety decisions easier and faster. Product offerings include real-time, wireless systems, as well as single-use data loggers.

XpressPDF™ Logger

Temperature monitoring logger

GO PDF Mini Logger

Temperature monitoring logger in compact size

The GO PDF Mini loggers monitor time and temperature of perishable products during distribution and storage. These easy-to-use loggers eliminate the need for reading devices and proprietary software and are optimal for applications requiring fully independent operation – simply activate and place with your shipment.



Technical Specifications

Alarm Indicators:	No (historical data logger only)
Battery:	UN38.3 compliant
Certifications:	FCC, CE, RoHS, EN12830
CSV File:	Yes
Export To Other Applications:	Generates PDF, CSV 15, 60, 90 days (3, 12 and 20 min recording intervals, respectively)
In-Use Life:	
IP Rating:	IP67
Marking Capabilities:	No
Operating Environment:	-30°C to 70°C (-22°F to 158°F)
Operating System:	Windows 32 bit, 64 bit
Recording Interval:	Every 3, 12 and 20 minutes
Resolution:	0.1 °C
Shelf Life:	15 months
Size:	22 mm x 75 mm (0.87 in x 2.95 in) without pouch
Start Delay:	30 minutes
Stop Button:	No
Temperature Accuracy:	±0.5°C typical between -20°C to 40°C (-4°F to 104°F) ±1.0°C (other ranges)
Time Zone:	Reconciled to UTC
Weight:	12.00 g (0.42 oz)



XpressPDF Logger digitally monitors time and temperature of perishable products during distribution and storage. Loggers are flat and feature an integrated USB connection point which can be plugged directly into the USB port of a computer. Once connected, the logger automatically generates a PDF file containing complete time and temperature history, including graphs and summary data. XpressPDF Logger eliminates the need for reading devices and proprietary software and are optimal for applications requiring fully independent operation.

Technical Specifications

Certification:	RCM, China RoHS, EN12830
Embedded CSV File:	Yes
Export To Other Applications:	Generates PDF with embedded CSV on PC
In-Use Life:	90 days, 110 days or 160 days
Memory:	25,920 data points
NIST Traceable:	Yes
Operating Environment:	-30°C to 70°C (-22°F to 158°F)
IP Rating:	IP67
Marking Capabilities:	Yes
Operating System:	Windows 32-bit, 64-bit
Recording Interval:	Every 5 minutes, 10 minutes or 15 minutes
Shelf Life:	15 months
Size:	2.28 in x 1.42 in x .21 in (58 mm x 36 mm x 5.4 mm)
Start Delay:	30 minutes
Temperature Accuracy:	Typical +/- 0.5°C
Time Zone:	UTC
Weight:	12 g (0.4 oz)

GO NFC Logger

Time & temperature data through a mobile device



GO NFC Loggers monitor time and temperature of perishable products during distribution and storage. Loggers are flat and transfer data via short-range, near field communications (NFC) using phones and tablets. Logger data is immediately available via mobile application or using the GO NFC Pad Reader. In addition, GO NFC Loggers leverage the capabilities of Android and iOS phones and eliminate the need for proprietary readers. Data is easily sent to any email address via the mobile application.

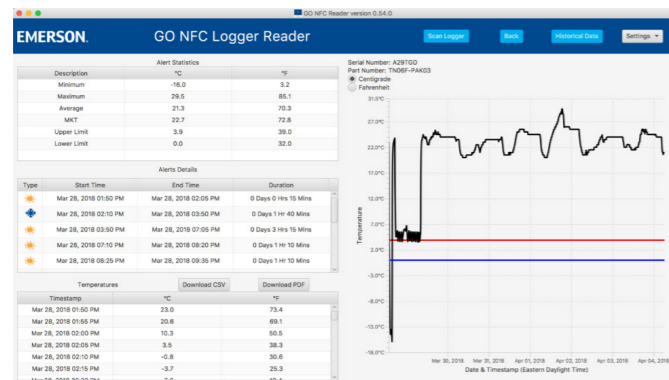
Cloud-based access customers who are interested in maintaining 24/7 historical records can subscribe to cloud upload capabilities where data can be accessed whenever needed.

Technical Specifications

Alarm Configurations:	Upper/lower/both/none
Alarm Indicators:	LEDs indicate temp over/under/OK
Certifications:	FCC, CE, RCM, China RoHS, WEEE
Memory:	1922 hard data points
NIST Traceable:	Yes
Operating Environment:	-25°C to 60°C (-13°F to 140°F)
Read Range:	Up to 5.08 cm (2 in)
Reading Redundancy:	GO NFC Pad Reader
Recycle Options:	GO GreenSense™ Program
In-Use Life:	6 days, 15 days, 30 days, 60 days, or 90 days
IP Rating:	IP67
Shelf Life:	15 months
Size:	61 mm x 81 mm (2.4 in x 3.4 in)
Start Delay:	Standard 30 minutes, customizable
Supported Readers:	Android™ 4.1/ iPhone® 7 or newer with the NFC app, NFC-enabled tablets, NFC Pad Reader with software Mac and Windows compatible
Temperature Accuracy:	-25°C to 60°C (-13°F to 140°F): ±0.5°C (32.9°F)
Temperature Resolution:	0.1°C (32.2°F)
Temperature Sampling Frequency:	One minute, 5 minute average record
Weight:	14.2 g (0.5 oz)



Scan the QR code and download the GO NFC Reader on your phone



GO USB Logger

Reusable temperature logger with humidity and probe

The GO USB family of loggers offer a versatile solution to monitoring areas within your cold chain. With a LCD display and user configuration options, loggers are suitable for closed-loop scenarios as well as import/export applications. Depending on product model, the loggers measure ambient temperature and humidity, ambient temperature only, or ambient temperature and probe temperature. A range of useful information such as mean kinetic temperature, minimum and maximum temperatures and humidity, average temperature, alerts, and much more is presented in a secure PDF report which is generated automatically when connected to a PC.

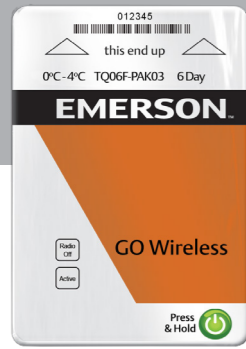
The configuration software allows users to customize the loggers to meet their cold chain measurement needs.

Data gathered and stored can be easily shared among key stakeholders. An audit trail is also generated within the PDF report with time stamps showing marked events and handling of the logger.



Technical Specifications

	GO USB Temp (T1XD)	GO USB Humidity (TH1XD)	GO USB Probe (TP1XD)
Alerts:	Yes (user configurable)	Yes (user configurable)	Yes (user configurable)
Battery Life:	12-24 months (configuration dependent)	12-24 months (configuration dependent)	12-24 months (configuration dependent)
Certifications:	FCC, CE, RCM, EN12830	FCC, CE, RCM, EN12830	FCC, CE, RCM, EN12830
Configuration Software:	Yes	Yes	Yes
Humidity Accuracy:	N/A	At 25°C, between 0% and 95% RH: ±5%	N/A
IP Rating (with Cap & Plug):	IP54	IP30	IP54
LED:	Green = On, Red = Alert	Green = On, Red = Alert	Green = On, Red = Alert
LCD Information:	Current temperature, Min/Max temperature, Avg temperature, MKT, Alert event, Battery level, Configured time (current or running total time)	Current temperature, Current humidity, Min/Max temperature, Min/Max humidity, MKT, Alert event, Battery level, Configured time (current or running total time)	Current temperature (ambient and probe), Min/Max temperature (ambient and probe), MKT & Avg (ambient and probe), Alert event, Battery level, Configured time (current or running total time)
Memory Data Points:	32,000 ambient temperature	16,000 ambient temperature / 16,000 humidity	16,000 ambient temperature / 16,000 probe
Operating Environment:	-30°C to +70°C (-22°F to +158°F)	-30°C to +70°C (-22°F to +158°F)	-30°C to +70°C (-22°F to +158°F)
Operating System:	Professional Versions of Vista, Windows 7, Windows 8, Windows 10, Adobe Reader SW (version 9 or later)	Professional Versions of Vista, Windows 7, Windows 8, Windows 10, Adobe Reader SW (version 9 or later)	Professional Versions of Vista, Windows 7, Windows 8, Windows 10, Adobe Reader SW (version 9 or later)
Probe:	N/A	N/A	1.5 m (4.9 ft) Weight 15 g (0.53 oz)
Probe Measurement Range:	N/A	N/A	-80°C to +70°C (-112°F to +158°F)
Replaceable Battery:	½ size AA (3.6V Lithium)	½ size AA (3.6V Lithium)	½ size AA (3.6V Lithium)
Resolution:	0.1°C (0.18°F)	0.1°C (0.18°F)	0.1°C (0.18°F)
Shelf-Life:	12 months	12 months	12 months
Size:	108 mm x 48 mm x 19 mm (4.25 in x 1.89 in x 0.74 in)	108 mm x 48 mm x 19 mm (4.25 in x 1.89 in x 0.74 in)	108 mm x 48 mm x 19 mm (4.25 in x 1.89 in x 0.74 in)
Sound Alert (Buzzer):	Yes (user configurable)	Yes (user configurable)	Yes (user configurable)
Temperature Accuracy (Ambient):	Typical: ±0.5°C (±0.9°F) between -20°C and +60°C (-4°F and 158°F) ±0.7°C (±1.4°F) other	Typical: ±0.5°C (±0.9°F) between -20°C and +60°C (-4°F and 158°F) ±0.7°C (±1.4°F) other	Typical: ±0.5°C (±0.9°F) between -20°C and +60°C (-4°F and 158°F) ±0.7°C (±1.4°F) other
Temperature Accuracy (Probe):	N/A	N/A	Typical: ±1.5°C (±2.7°F) between -80°C to -30°C (-112°F to -22°F ±2°C (±3.7°F) other
Weight:	52 g (1.83 oz)	52 g (1.83 oz)	52 g (1.83 oz)



AutoSense™ Inbound

A complete automatic wireless temperature monitoring system

Inbound monitoring is self-contained, utilizes cellular networks, and does not require IT departments to oversee installation or ongoing maintenance. GO Wireless Loggers arrive at the location and are automatically uploaded by the readers. Temperature data is sent via a cellular modem to a cloud repository where text email alerts are created and delivered to predefined individuals.

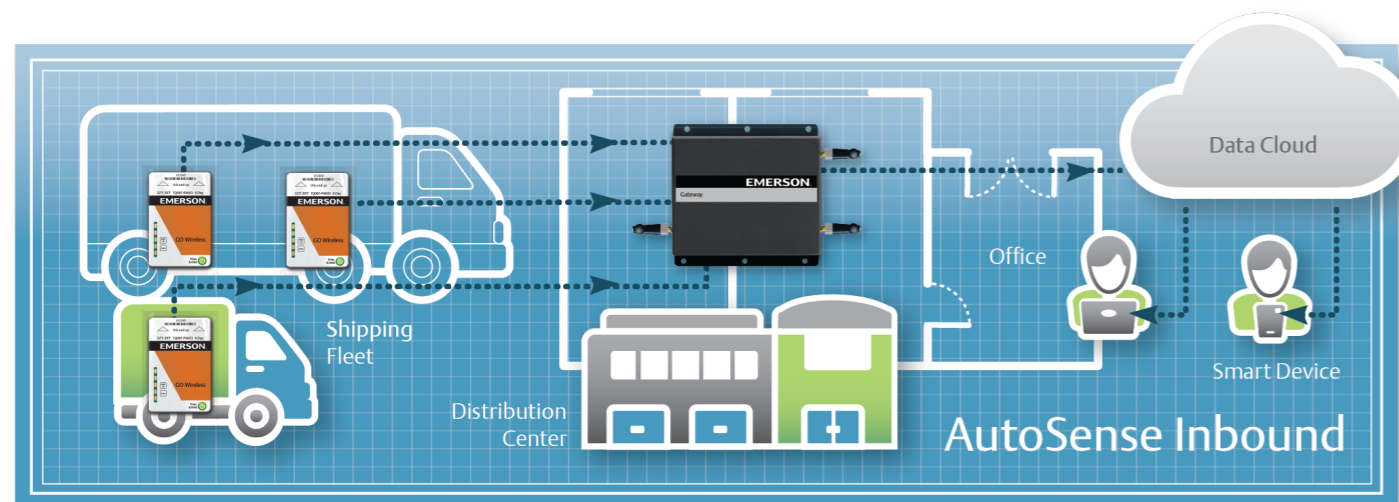
Technical Specifications

GO Wireless Logger

Alarm Configurations:	Upper/lower/both/none (consecutive)
Calibration:	Silicon based sensor is calibrated at the time of manufacture by Texas Instruments; NIST certificate of traceability available
Frequency:	US 915 MHz or EU 868 MHz
In-Use Life:	Up to 30 days, more in-use life with hibernation
Memory:	1922 hard data points
Read Range:	91 meters (300 feet)
Shelf Life:	12 months, Frozen SKU: 8 months
Size:	60 mm x 84 mm (2.4 in x 3.3 in)
Start Delay:	Standard 30 minutes, customizable
Temperature Accuracy:	+/- 0.5 typical between -20°C to 60°C (-4°F to 140°F)
Temperature Resolution:	0.1°C
Temperature Sampling Frequency:	One minute, five minute average record
Weight:	17 g (0.6 oz)

Reader Specifications

Frequency:	US 915 MHz or EU 868 MHz
Indicators:	3-color LEDs showing system status and signal strength
Internet Connectivity:	Can utilize existing 802.11 WiFi or hardwire Ethernet connection at customer request; US 2.4Ghz ISM WiFi frequency band; multiband security mixed WPA/WPA2-PSK; FCC, IC, CE, RCM, WEB, WWAN 4G/3G/2G
Power:	110VAC
Read Range:	91 meters (300 feet)
Installation & Remote Maintenance:	Performed by Emerson



GO Bluetooth Plus Logger

Time, temperature, humidity and probe read with a mobile device

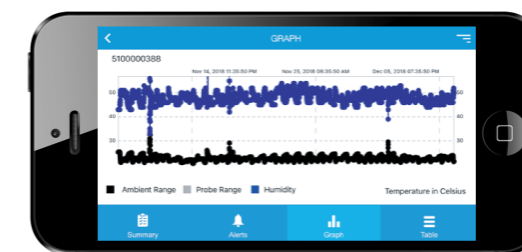
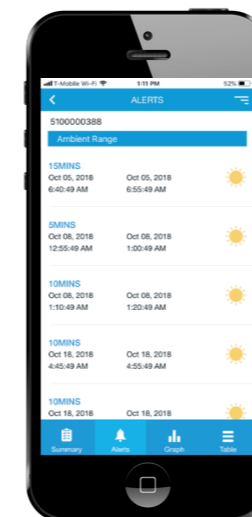


GO Bluetooth Loggers monitor time, temperature, humidity, and pulp temperature of perishable products in pre-cooling scenarios and during transit. Data is transferred wirelessly to most Bluetooth-enabled Android and iOS phones and tablets via the GO BT Reader mobile app. Data is received up to 30 meters away, eliminating the need for proprietary readers and software. For ease of use, the mobile application displays temperature and humidity data in a single graph.

The optional probe provides a wider temperature operating range and enables users to take both internal and external temperature readings. Loggers sample temperature every five minutes and both the temperature sensor and associated probe are NIST traceable.

GO Bluetooth Probe:

Cable Length:	1.5 m (5 ft) cable connection/ 3.5mm (0.14 in) plug/weight 0.8 oz (22.7 g)
Diameter:	#PR1, 6 mm (0.24 in) #PR3, 3 mm (0.12 in)
Probe Length:	#PR1, 57 mm (2.25 in) #PR3, 150 mm (5.9 in)
Probe Sensor Operating Environment:	-50°C to 150°C (-58°F to 302°F)
Temperature Accuracy:	+/- 0.125°C typical at 25°C (+/- 0.225°F typical at 77°F) +/- 0.625°C max -50 to 150°C (+/- 1.125°F max -58°F to 302°F)



Scan the QR code and download the GO Bluetooth Plus Logger Reader on your phone

Technical Specifications

Device:

Alarm Configurations:	Programmable via GO BT Reader mobile application
Calibration:	Silicon based sensor is calibrated at the time of manufacture by Texas Instruments
Certifications:	FCC, IC, CE, RCM, NOM, Anatel, SRRC, RoHS, WEEE, DID, BQB, Bluetooth 4.0
Export To Other Applications:	Generates PDF or CSV
IP Rating:	IP30
In-Use Life:	Up to 180 days
Memory:	130,000 data points
Humidity Accuracy:	At 25°C, between 20%RH and 80%RH: ±5%RH
Mobile Applications:	GO BT Reader (available from Google Play, Apple Store, Baidu Store, company web site or QR code on logger)
NIST Traceable:	Yes
Operating Range:	Unit Sensor: -30°C to 60°C (-22°F to 140°F)
Operating Relative Humidity:	0 to 100% RH
Read Range:	Up to 30 meters (100 feet)
Sampling Interval:	5 minutes
Shelf Life:	15 months
Size:	68 mm x 39 mm x 13 mm (2.68 in x 1.54 in x 0.51 in)
Supported Readers:	iOS 9 and above, Android 4.3 and above, BT4.0 and above
Temperature Accuracy:	+/-0.5°C (Maximum) from 0°C to +65°C +/-1.0°C (Maximum) from -40°C to +125°C (+/- 0.9°F (Maximum) from 32°F to 149°F +/-1.8°F (Maximum) from -40°F to 32°F and 149°F to 275°F
Weight:	34 g (1.2 oz)

GO Real-Time 4G/5G Tracker

Temperature, location and security with dual-mode 4G/5G coverage

Keeping track of shipments has never been easier with the GO Real-Time 4G/5G Tracker. Using cellular technology, trackers provide temperature and location alerts as your shipment moves through the supply chain. And now, with our 4G/5G cellular technology, connectivity and access to your data is further enhanced. Rest assured that visibility to temperature, humidity, and location data will be available despite the ongoing transition in the cellular technology industry.

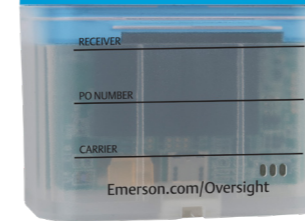
Technical Specifications

Battery:	UN38.3 Compliant	Oversight Dashboard:	Emerson.com/Oversight
Cellular:	CAT M1/NB1: B1/B2/B3/B4/B5/B8/B12/B13/B18/B19/B20/B26/B28 EGPRS: 850/900/1800/1900MHz	Shelf Life:	Shipped with a minimum in-use and shelf life of approximately 6 months. Please check the "Activate By Date" on the product box and follow a first-in-first-out process.
Certifications:	FCC, IC, CE, PTCRB, RCM, IFETEL, RTCA/DO-160G Compliant	Size:	76 mm x 51 mm x 19 mm (3.0 in x 2.0 in x 0.75 in)
Device Storage:	Optimal: Below 20°C and 60% RH	Temperature Range:	-20°C to 60°C (-4°F to 140°F) operating environment
Humidity Accuracy:	At 25°C, between 20% RH and 80% RH: ±10% RH	Temperature Accuracy:	±0.5°C (0.9°F) typical between -20°C to 60°C (-4°F to 140°F)
Humidity Range:	20% to 95% operation typical	Weight:	68 g (0.15 lbs)
In-Use Life:	Tri-mode with up to 20 days of operation, 6-minute measurements reported at 18-minute intervals		
IP Rating:	IP44		
Light Sensor Sensitivity:	±0.5 Lux, minimum detectable 1.0 Lux		



EMERSON™

GO Real-Time XL 4G/5G



GO Real-Time XL 4G/5G Tracker

Temperature, location and security with dual-mode 4G/5G coverage

Extended battery life provides full coverage for your products on the road, in the port and out on the water. When your ship leaves port, the GO Real-Time XL 4G/5G Tracker keeps track of the temperature and humidity. Every time the ship nears port, the unit automatically connects and uploads data before the ship reaches the docks. And now, with our tri-mode 4G/5G cellular technology, connectivity and access to your data is further enhanced. Rest assured that visibility to temperature and location data will be available despite the ongoing transition in the cellular technology industry. The GO Real-Time XL 4G/5G Tracker senses light when doors are opened and alerts you when your products are at risk on the road.

Technical Specifications

Battery:	UN38.3 Compliant	Oversight Dashboard:	Emerson.com/Oversight
Cellular:	CAT M1/NB1: B1/B2/B3/B4/B5/B8/B12/B13/B18/B19/B20/B26/B28 EGPRS: 850/900/1800/1900MHz	Shelf Life:	Shipped with a minimum in-use and shelf life of approximately 6 months. Please check the "Activate By Date" on the product box and follow a first-in-first out process.
Certifications:	FCC, IC, CE, PTCRB, RCM, IFETEL, KCC, RTCA/DO-160G Compliant	Size:	76 mm x 51 mm x 19 mm (3.0 in x 2.0 in x 0.75 in)
Device Storage:	Optimal: Below 20°C and 60% RH	Temperature Range:	-20°C to 60°C (-4°F to 140°F) operating environment
Humidity Accuracy:	At 25°C, between 20% RH and 80% RH: ±10% RH	Temperature Accuracy:	±0.5°C (0.9°F) typical between -20°C to 60°C (-4°F to 140°F)
Humidity Range:	20% to 95% operation typical	Weight:	68 g (0.15 lbs)
In-Use Life:	Tri-mode with up to 60 days of operation, 10-minute measurements reported at 60-minute intervals		
IP Rating:	IP44		
Light Sensor Sensitivity:	±0.5 Lux, minimum detectable 1.0 Lux		

GO Real-Time Reusable 4G/5G Tracker

Temperature, location and security dual-mode 4G/5G coverage

GO Real-Time Reusable 4G/5G Tracker is a temperature monitoring solution that does not require fixed installation or hardware maintenance, with continuous coverage for your products over the road. The reusable solution is designed for customers who would like to reuse the same tracker on multiple shipments. With our 4G/5G cellular technology and ability to recharge, access to your data is further enhanced. The GO Real-Time Reusable 4G/5G Tracker senses light when doors are opened and alerts you when your products are at risk on the road.

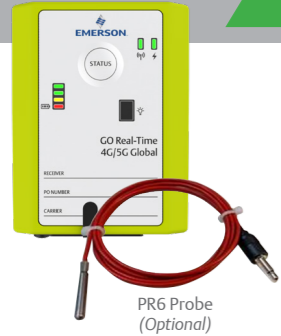
Technical Specifications

Battery:	UN38.3 Compliant	Light Sensor Sensitivity:	±0.5 Lux, minimum detectable 1.0 Lux
Cellular:	CAT M1/NB1: B1/B2/B3/B4/B5/B8/B12/B13/B18/B19/B20/B26/B28 EGPRS: 850/900/1800/1900MHz	Oversight Dashboard:	Emerson.com/Oversight
Certifications:	FCC, IC, CE, PTCRB, RCM, IFETEL, RTCA/DO-160G Compliant	Shelf Life:	Shipped with a minimum in-use and shelf life of approximately 6 months. Please check the "Activate By Date" on the product box and follow a first-in-first out process.
Device Storage:	Optimal: Below 20°C and 60% RH	Size:	78 mm x 52 mm x 33 mm (3.07 in x 2.06 in x 1.31 in)
Humidity Accuracy:	At 25°C, between 20% RH and 80% RH: ±10% RH	Temperature Range:	-20°C to 60°C (-4°F to 140°F) operating environment
Humidity Range:	20% to 95% operation typical	Temperature Accuracy:	±0.5°C (0.9°F) typical between -20°C to 60°C (-4°F to 140°F)
In-Use Life:	Tri-mode with up to 60 days of operation, 10-minute measurements reported at 60-minute intervals	Weight:	136 g (0.30 lbs)
IP Rating:	IP44		



GO Real-Time 4G/5G Global Tracker

Temperature, humidity, location and security using cellular M2M technology



Tracking your shipments with GO Real-Time 4G/5G Global Trackers simplifies and strengthens your cold chain by providing up to date temperature and location alerts. And now, strengthened with our tri-mode 5G cellular technology (CATM/NB1oT/GSM), connectivity and access to your data is further enhanced. Rest assured that visibility to temperature, humidity, and location data will be available despite the ongoing transition in the cellular technology industry. For enhanced functionality, GO Real-Time 4G/5G Global Trackers offer external probes for pulp temperature or dry ice applications. The tracker is also available in a reusable model for customers who would like to reuse the same tracker on multiple shipments.

Technical Specifications

Battery:	UN38.3 Compliant	Light Sensor Sensitivity:	±0.5 Lux, minimum detectable 1.0 Lux
Cellular:	CAT M1/NB1: B1/B2/B3/B4/ B5/B8/B12/ B13/B18/B19/ B20/B26/B28/B39 EGPRS: 850/900/1800/1900MHz	Oversight Dashboard:	Emerson.com/Oversight
Certifications:	FCC, PTCRB, CE, IC	Probe:	Optional (-200°C to 100°C operating)
Device Storage:	Optimal: Below 20°C and 60% RH	Shelf Life:	Shipped with a minimum in-use and shelf life of approximately 6 months. Please check the "Activate By Date" on the product box and follow a first-in-first out process.
Humidity Accuracy:	At 25°C, between 20% RH and 80% RH: ±5% RH	Size:	73 mm x 95 mm x 25 mm (2.9 in x 3.8 in x 1.0 in)
Humidity Range:	20% to 95% operation typical	Temperature Range:	-20° C to 60° C (-4° F to 140° F) operating environment
In-Use Life:	Tri-mode with up to 20 days of operation, 6-minute measurements reported at 18-minute intervals	Temperature Accuracy:	±0.5°C (0.9°F) typical between -20°C to 60°C (-4°F to 140°F)
IP Rating:	IP62	Weight:	91 g (0.2 lbs)

GO Real-Time 4G/5G Global Plus Tracker

Temperature, humidity, location and security using cellular M2M technology

Extended battery life provides full coverage for your products on the road, in the port and out on the water. When your ship leaves port, the GO Real-Time 4G/5G Global Plus Tracker keeps track of the temperature and humidity. Every time the ship nears port, the unit automatically connects and uploads data before the ship reaches the docks. The GO Real-Time 4G/5G Global Plus Tracker senses light when doors are opened and alerts you when your products are at risk. And now, with our tri-mode 5G cellular technology (CATM/NB1oT/GSM), connectivity and access to your data is further enhanced. Rest assured that visibility to temperature and location data will be available despite the ongoing transition in the cellular technology industry. For enhanced functionality, GO Real-Time 4G/5G Global Plus Tracker offer external probes for pulp temperature or dry ice applications. The tracker is also available in a reusable model for customers who would like to reuse the same tracker on multiple shipments with up to 90 days of operation.



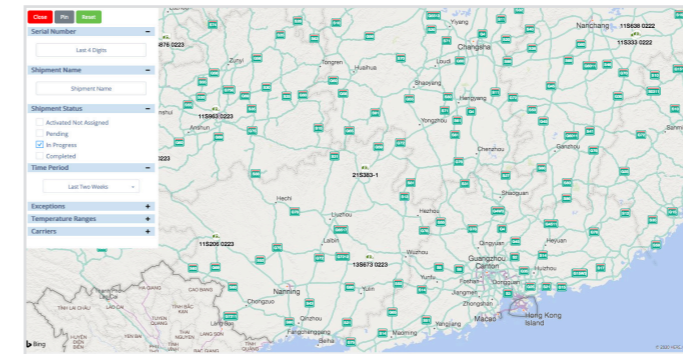
Technical Specifications

Battery:	UN38.3 Compliant	Oversight Dashboard:	Emerson.com/Oversight
Cellular:	CAT M1/NB1: B1/B2/B3/B4/ B5/B8/B12/B13/ B18/B19/ B20/B26/B28/B39 EGPRS: 850/900/1800/1900MHz	Probe:	Optional (-200°C to 100°C operating)
Certifications:	FCC, PTCRB, CE, IC	Shelf Life:	Shipped with a minimum in-use and shelf life of approximately 6 months. Please check the "Activate By Date" on the product box and follow a first-in-first out process.
Device Storage:	Optimal: Below 20°C and 60% RH	Size:	83 mm x 124 mm x 53 mm (3.2 in x 4.9 in x 2.1 in)
Humidity Accuracy:	At 25°C, between 20% RH and 80% RH: ±5% RH	Temperature Range:	-20° C to 60° C (-4° F to 140° F) operating environment
Humidity Range:	20% to 95% operation typical	Temperature Accuracy:	±0.5°C (0.9°F) typical between -20°C to 60°C (-4°F to 140°F)
In-Use Life:	Tri-mode with up to 90 days of operation , 60-minute measurements reported at 60-minute intervals	Weight:	363 g (0.8 lbs)
IP Rating:	IP32		
Light Sensor Sensitivity:	±0.5 Lux, minimum detectable 1.0 Lux		

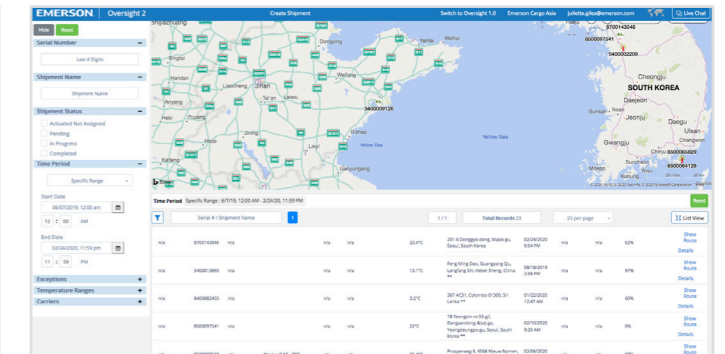
Oversight Software and Services

Oversight Dashboard

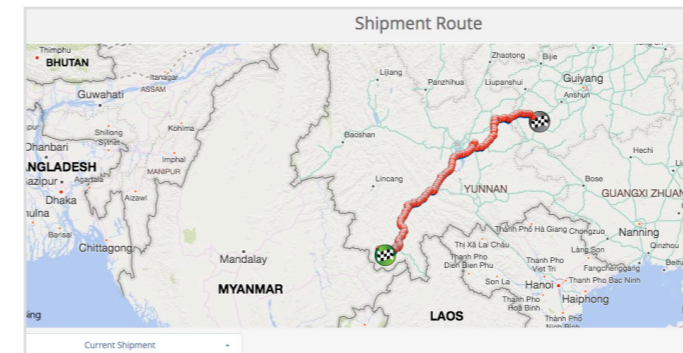
Comprehensive and automated reporting is provided through the Oversight Dashboard. Visit Emerson.com/Oversight and enter the GO Real-Time Tracker serial number. Access real-time information about your shipment or login to your secure web portal and see all of your shipments at a glance.



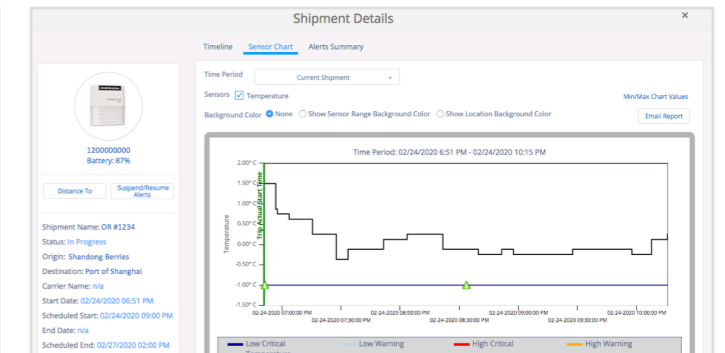
Oversight Map View



Oversight Shipment View



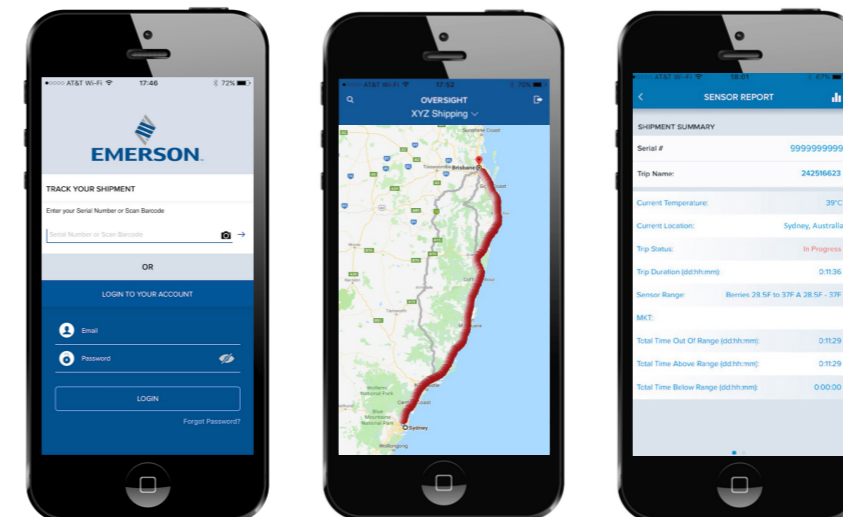
Oversight Shipment Route



Oversight Shipment Details

Oversight Mobile

Oversight mobile enables you to view critical shipment details including temperature and location in real-time, direct from your smartphone. GO Real-Time Tracker are placed on perishable shipments and communicate data via cellular connectivity. Simply open the Oversight Mobile app to view data or set up alerts to be sent directly to your smartphone. Available on Android and iOS devices.



Scan the QR code and download Oversight on your phone



Oversight Cargo Services

Track Your Shipment

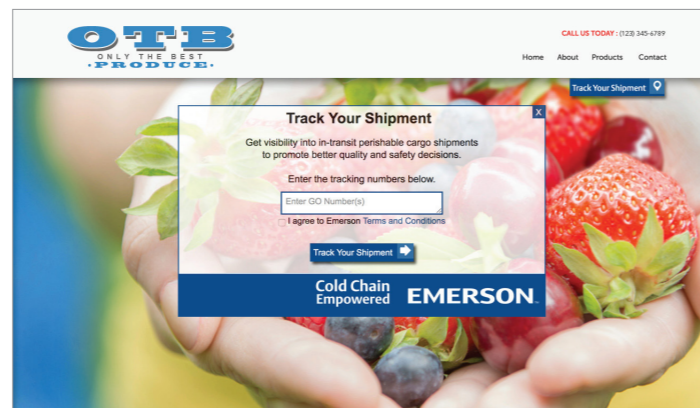
Provide customers and employees direct access to track real-time critical shipments

Designed with growers and producers in mind, the Track Your Shipment module provides quick and easy access to real-time in-transit, perishable shipment data. Our website widget can be easily embedded on the homepage of your website for easy customer access. Or, the widget can be placed on your internal intranet enabling employees to do quick order and quality tracking.

The interface allows users to simply input a GO Real-Time Tracker serial number to gain visibility to location and temperature data. Choose from five color options to customize the user experience to your website and brand standards.

Benefits

- No cost and convenient method to track perishable shipments and obtain visibility to shipment and temperature data
- Improve operational efficiency, enhance transparency and promote food quality and safety
- Match design to fit existing branding, customize the experience and elevate your brand



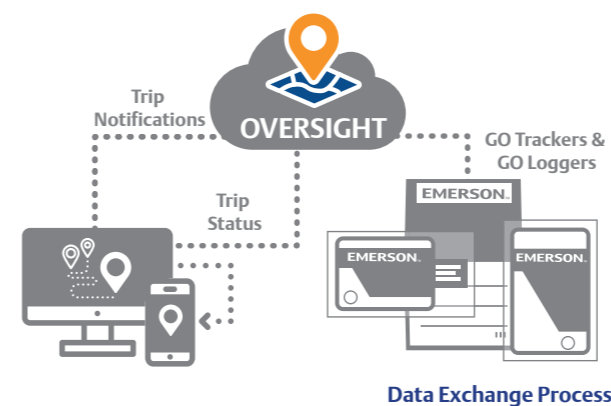
Data Integration

Consolidate and automate data streams of shipment information into the platform of your choice

Consolidating data streams of shipment information and scores of temperature monitoring data can drastically improve the efficiency of your operation. We provide seamless in-transit cold chain data integration for those seeking to consolidate shipment data into existing software platforms.

- Eliminate disparate platforms, siloed data streams and countless logins
- Reduce duplicate work by streamlining shipment creation and processes into one system
- Receive shipment updates, temperature and sensor alerts in a single view

All while enjoying the robust cold chain data provided by Oversight, our cloudbased temperature monitoring portal.



Benefits

- Automate create shipment process and receive logger or tracker data seamlessly
- Seek to lessen overhead costs and utilize staff for other priority responsibilities
- Simplify your operation and consolidate in-transit cold chain data

About Emerson

Emerson (NYSE: EMR), headquartered in St. Louis, Missouri (USA), is a global technology and engineering company providing innovative solutions for customers in industrial, commercial, and residential markets. Emerson Commercial and Residential Solutions business helps ensure human comfort and health, protect food quality and safety, advance energy efficiency, and create sustainable infrastructure. For more information visit www.Emerson.com.

Contact us

United Arab Emirates

Jebel Ali Free Zone
P.O. Box 26382, Dubai
United Arab Emirates
Toll Free: 8000 441 3428
Tel: +971 4 8118100
Fax: +971 4 8865465

Saudi Arabia

P.O. Box 34332 - 3620
2nd Industrial City, 67 St.
Dammam, Saudi Arabia
Toll Free: 8008 443 426
Tel: +966 3 8147560
Fax: +966 3 8147570

South Africa

11 Quark Crescent
Linbro Business Park
Sandton 2065, South Africa
Toll Free: 0800 980 3711
Tel: +27 11 451 3700
Fax: +27 11 451 3800

Egypt

P.O.Box 11799
11 Mustafa Refaat Street
Sheraton, Heliopolis
Cairo, Egypt
Tel: +20 2 226 5854

  EmersonMEA

 EmersonMiddleEastAfrica

EmersonClimateMEA.com

EMERSON. CONSIDER IT SOLVED.™