

# White-Rodgers Replacement Parts for Carrier and ICP Branded Equipment

Your One-Stop Solution



If you are servicing Carrier/ICP branded equipment, you can now access the most popular Carrier/ICP replacement parts from your local distributor.

White-Rodgers offers competitive pricing on Direct OEM replacement parts for furnaces, air handlers, heat pumps and condensing units. These controls are drop-in replacements with Carrier/ICP mounting and wiring, but are uniquely designed to maximize applications for increased cross references while adding features to optimize design elements.

We also offer Universal controls that replace hundreds of Carrier/ICP branded parts numbers. The extensive cross reference for both Carrier and ICP part numbers can be found on the packaging and in the White-Rodgers mobile app.

(Refer to the back cover for download instructions regarding the WR Mobile app).

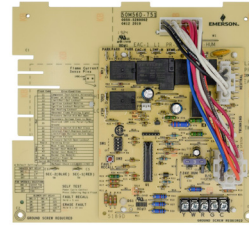


# CARRIER/ICP Replacements for Furnaces

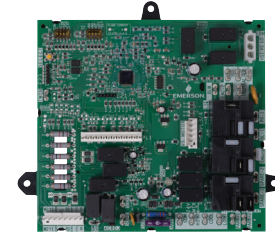
## Furnace Controls



- Reduce SKUs, replaces 5 Carrier controls
- Advanced diagnostics with tri-color LED and push button fault recall



- Utilizes modern ignition electronics
- Advanced diagnostics with tri-color LED and push button fault recall



- Reduce SKUs, replaces 4 Carrier controls
- Replaces PSC, variable speed & ECMx
- Harness included to replace ICP applications

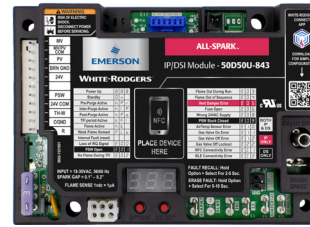
MODEL NUMBER	50M56U-751	50M56D-751	21V51D-751
Replacement Type	Carrier/ICP	Carrier/ICP	Carrier/ICP
Stages	Single Stage	Single Stage	Two-Stage
Ignition Type	HSI	HSI	HSI
Ignition Voltage	120 VAC	120 VAC	120 VAC
Blower Motor Type	PSC	PSC	PSC, Variable Speed or ECMx
Cross References	1172550, 1183599, 1184594, 1184783, 1186024, 1186115, 325878-751, CEPL130437-01, CEPL130437-01-1, CEPL130438-01, CEP130590-01, CEPL131004, CEPL131004-02, CEPL131004-20, CEPL131004-20-ICP, CEPL131012-01, CEPL131012-01-1, CEPL131012-02, CEPL131012-02-1, CEPL131012-20, HK42F004, HK42FZ007, HK42FZ008, HK42FZ009, HK42FZ011, HK42FZ013, HK42FZ016, HK42FZ018, HK42FZ034, HK42FZ036, HK42FZ045, HK42FZ061, HK42FZ062	784-83-10H, 784-9-I, CESO110020, CESO11048, CESO110057-00, CESO110057-01, CESO110057-02, HH84AA016, PCB1201-2A	1172551, 1172809, 1172551, 1184408, 325879-751, CEPL130455-01, CEPL130591-01, CEPL130591-41, CEPL130948-01, CEPL130948-02, CEPL131043-01, HK42FZ005, HK42FZ010, HK42FZ015, HK42FZ017, HK42FZ019, HK42FZ020, HK42FZ028, HK42FZ040, HK42FZ041

# CARRIER/ICP Replacements for Furnaces

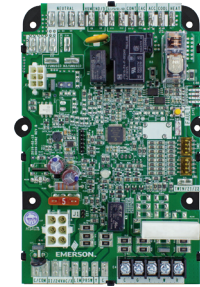
## Universal Controls



- Designed for Carrier mounting
- Factory Wiring plugs directly into the control without harnesses



- Configurable for both 24V intermittent pilot (IP) and direct spark ignition (DSI) systems
- Simplify Installation with the White-Rodgers Connect App



- Tri-Color LED displays status and fault codes
- Six holes for either 2 or 4 hole mounting

MODEL NUMBER	50X57-843	ALL-SPARK™ 50D50U-843	50F06-843
Replacement Type	Universal - IFC	Universal - Non-Integrated Module	Universal - Fan Timer
Stages	Single Stage	Single Stage	Single Stage
Ignition Type	HSI	24 VAC intermittent pilot + DSI	HSI-pilot, DSI
Ignition Voltage	120 VAC	High voltage spark	—
Blower Motor Type	ECMx	No circulator output	PSC
Cross References	1183386, 1184412, CEPL130934-01, CEPL130934-02, CEPL131011-01, CEPL131011-02, HK42FZ027, HK42FZ033, HK42FZ039, HK42FZ047	1000167, 1005651, 1011449, 1147039, 1147669, 1147711, 1150558, 1650278, 1665151, 1665207, 16665241, 35605605115, LH33CM600, LH33CZ007, LH33CZ010, LH33EP040, LH33WP001, LH33WP001A	1008773, 1008786, 1009836, 1009837, 1009838, 1010031, 1011179, 1011543, 1011927, 1012106, 1012358, 1014460, 1084197, 1150489, 1160192, 1170063, 1138-83,200A, 1138-200, CAR20054502, HQ1008773HW, HQ1008786HW, HQ1009836HW, HQ1009837HW, HQ1009838HW, HQ1010031HW, HQ1011179HW, HQ1011543HW, HQ1011927HW, HQ1012106HW, HQ1012358HW, HQ1084197HW, HQ1170063HW

# CARRIER/ICP Replacements for Furnaces

## Gas Valves



- LP conversion kit included

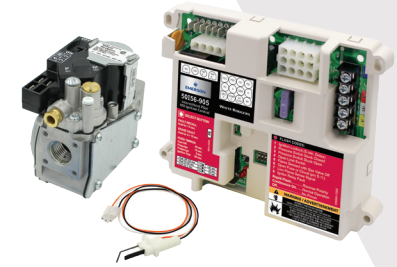


- LP conversion kit included



- LP conversion kit included
- Reducer bushing kit included

## Intelligent Valve Retrofit Kit



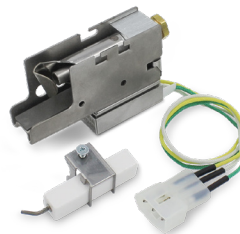
- Upgrade intelligent valve systems to a reliable standard IP gas valve and 120V HSI

MODEL NUMBER	36J24-614	36J55-614	36C94-303
Application	HSI/DSI	HSI/DSI	Cycle Pilot
Stages	Single Stage	Two-Stage	Single Stage
Opening Type	Slow Opening	Slow Opening	Fast Opening
Pipe Size	1/2" x 1/2"	1/2" x 1/2"	3/4" x 3/4"
Flow Direction	90° Bottom Outlet	90° Bottom Outlet	Straight Thru
Cross References	EF32CW206, EF32CW210	EF33CW180, EF33CW192	1162470, EF32CB197A, EF32CB198A, EF32CW183, EF32CW183A, EF32CW233, EF32W184

MODEL NUMBER	50I56D-905
Application	HSI
Stages	Single Stage
Kit Includes	Mechanical intermittent pilot gas valve, Integrated single stage furnace control, 120V nitride ignitor with flame sensor assembly
Cross References	1008751, 1008752, 1009089, 1009090, 1009093, 1009094, 1010988, 1011024, 1011421, 1096725, 1170429, 1170430, HQ1008751HW, HQ1008752HW, HQ1009089HW, HQ1009090HW, HQ1009093HW, HQ1009094HW, HQ1010988HW, HQ1011024HW, HQ1011421HW, HQ1096725HW, HQ1170429HW, HQ1170430HW

## Pilot Burner Assembly

MODEL NUMBER	791P-751KT1
Voltage	30 VAC, 60 Hz
Cross References	535-733B, 535-740, 535-740A, 740A, AP5641413, CAR1830620, CARL38999, LH33JZ053, LH680005, P671-1406



- Proprietary bi-metal switch design

# CARRIER/ICP Replacements for Flame Sensors & Ignitors

## Flame Sensor & Ignitors



- 3-year limited warranty
- High temperature rod withstands 2200°F



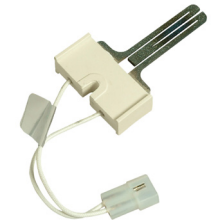
- 3-year limited warranty
- Carrier/ICP connectors for fast replacement



- 3-year limited warranty
- Upgrade carbide to nitride for 33-1/3" furnaces



- 3-year limited warranty
- Upgrade carbide to nitride for 40" furnaces



- 1-year limited warranty
- OEM material and construction

### MODEL NUMBER

**790-751A1**

**789A-751A1**

**789A-751KT1**

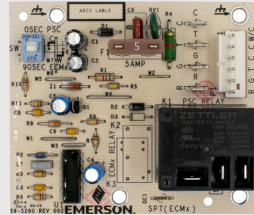
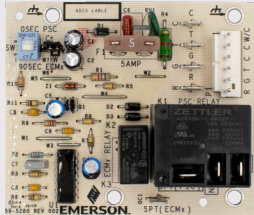
**789A-751KT2**

**767A-370**

Type	OEM approved material	Nitride	Nitride	Nitride	Carbide
Voltage	—	120 VAC	120 VAC	120 VAC	120 VAC
Shape	73° Bend	—	—	—	—
Lead Length	—	9.25"	9.25"	9.25"	5.25"
Cross References	1172827, 1179161, 1190383, 1176920, 1184322, LH680534, LH33WZ511, LH33WZ515, LH33WZ517, LH680012, LH680014, LH33WZ520, LH33WZ521	1176919, 50PK74, LH33ZG001	331930-751, LH33ZS001, LH33ZS001A, LH33ZS002, LH33ZS002A, LH33ZS003, LH33ZS003A, LH33ZS004 (33-1/3" furnaces)	332505-751, LH33ZS001, LH33ZS001A, LH33ZS002, LH33ZS002A, LH33ZS003, LH33ZS003A, LH33ZS004 (40" furnaces)	1380654, 1380672, 1380680, LH33ZS001, LH33ZS001A, LH33ZS002, LH33ZS002A, LH33ZS003, LH33ZS003A, LH33ZS004

# CARRIER/ICP Replacements for Air Handlers

## Air Handler Controls



- Reduce inventory by configuring for either PSC or ECMx
- Factor wiring for inline connector or spade terminals
- Factory wiring for inline connector or spade terminals
- Factory wiring for inline connector or spade terminals
- Dipswitch selectable blower off delay

### Model Number

**48M55-751**

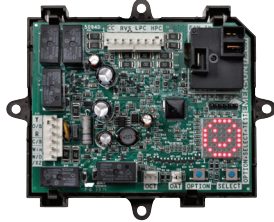
**48P55-751**

Model Number	48M55-751	48P55-751
Stages	Single Stage	Single Stage
Blower Motor Type	PSC or ECMx	PSC
Cross References	1005-83-166A, 1172975, 1171734, CEPL130541-01, CEPL130658-01-1, CES0130003-01, HK61EA002, HK61EA006, HK61EA010	1005-83-166A, 1171734, CEPL130541-01, CES013003-01, HK61EA002, HK61EA006



# CARRIER/ICP Replacements for Heat Pumps & Condensing Units

## Universal Defrost Control



- Selectable demand or timed defrost
- One-button configures to Carrier system
- Brownout & short-cycle protection

### Model Number

**47D01U-843**

Stages	Single Stage
Fan Motor Type	PSC
Cross References	1050-83-7B, 1084-83-100A, 1085843, 1087515, 1160717, 1171803, 1173425, 1173696, 1177927, 1185790, 150-83-6A, 621-500, 621-505, 621-509, 621-83-550D, 621-83-550H, 621-83-550L, 621-xxx, CEBD410104-02, CEBD430524-22, CEBD430524-24A, CEPL110104-02, CEPL130433-01, CEPL130433-02, CEPL130524-21, CEPL130524-22, CEPL130547-01, CES0110063-00, CES0110063-01, CES0110063-02, CES0110063-02A, CES0130024-00, CES0130024-01, CES0130049-00, CES0130076, DDL-30011-ICP, DTL-300000-ICP, HK25SZ359A, HK32EA001, HK32EA003, HK32EA007, HK32EA008, HK32FA003, HK32FA006, HQ1052757EX, HQ1086070, HQ108671RC, HQ1087953RC, HQ1987953

## Universal Contactor Upgrade



- Multi-Volt design for air conditioning & refrigeration single phase applications
- Completely sealed to keep out pests & debris
- 5x traditional contactor life

### Model Number

**49M11-843**

Coil Voltage	24 VAC, 50/60 Hz, 120/208/240 VAC, 50/60 Hz
Application	Up to 5 ton/40A, 1, 1.5 or 2 pole
Contacts	1 switched, 1 shunt
Cross References	1050699, 1050839, 1059574, 1091261, 1149650, 1150015, 1172472, 3100-15Q228, HN51CB024, HN51DC024, HN51JD024, HN51JD026, HN51KB024, HN51KC024, HN52KC024, HN52KD020, HN52KD025, HN52TC024, HN52TC040, P282-0311, P282-0321



**10A**  
**CAUTION**  
 This system contains high pressure R-410A refrigerant. Pressures may exceed the rated working pressures of R-22 service equipment. Refer to Product Information inside this panel Before Install or Servicing this unit.

**CAUTION**  
 Do not attempt to pump this system down. This system is not designed for recovery, service, or leak detection. The recovery and leak test are not allowed unless the system is properly charged.

**CAUTION**  
 Do not touch the fan blades. The fan blades are sharp. Do not touch the fan blades. The fan blades are sharp. Do not touch the fan blades. The fan blades are sharp.



## THE WHITE-RODGERS MOBILE APP:

Answers at your fingertips, with your smartphone or tablet.

- ✓ Latest cross reference
- ✓ Installation instructions
- ✓ Spec sheets
- ✓ Product selection



R-5179 (2/22)

©2022 Emerson Electric Co. • White-Rodgers and Emerson are trademarks of Emerson Electric Co. • All rights reserved • Customer Service or Technical Help: 888-725-9797 • [Emerson.com/White-Rodgers](https://www.emerson.com/White-Rodgers)



EMERSON. CONSIDER IT SOLVED.™